

TR2001 - TR2011 - TR2001-15M

Description - General Information

SCP with steel cable release, supplied with or without module
Cable Winch for opening and closing a mechanical SHEV.
Manually operated using a crank for comfort/ventilation.
Possibility of fitting the winch with 2 distance control modules .(pneu.and elect.)
Metal casing in red or white.



NF - Control devices
for Fire Safety Systems
www.marque-nf.com



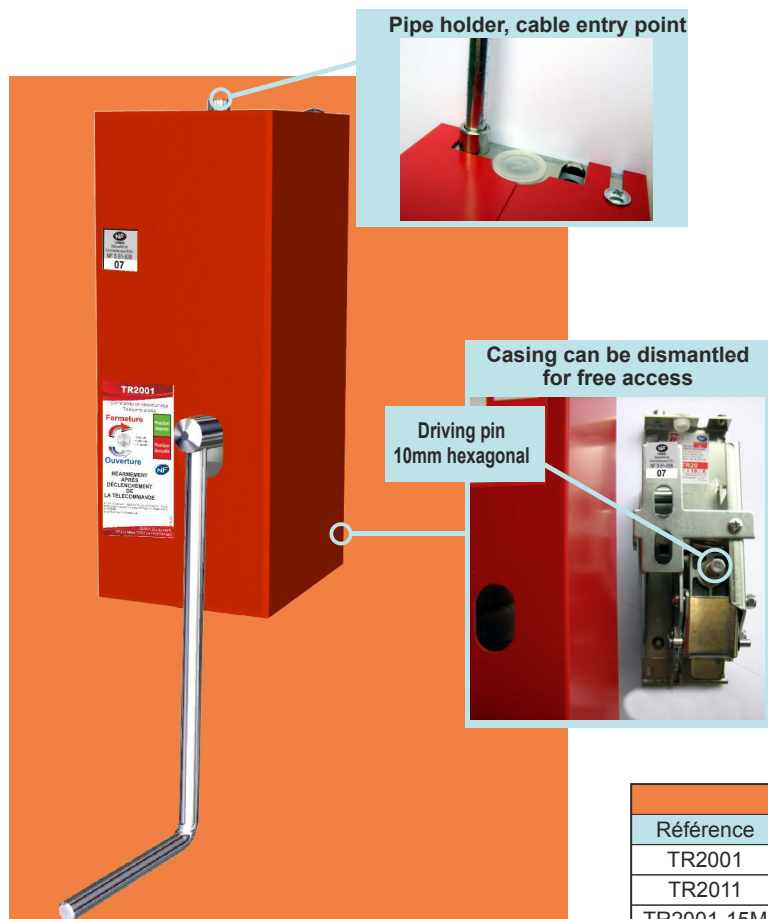
TR2001



TR2001-15M



TR2011

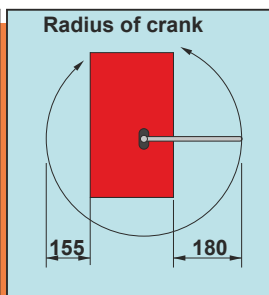
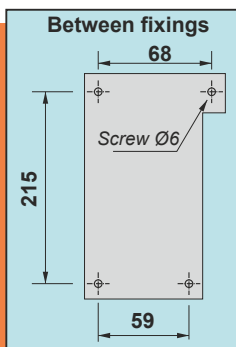
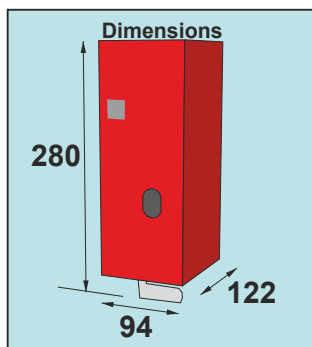


Identification of winches	
Référence	Casing colour and shape
TR2001	Red / square
TR2011	White / square
TR2001-15M	Red / Asymmetrical WITH storage space for crank

Electric DCMs	
Ref.	Type
MOD2024E (MOD.21)	24Vcc - 3.5W - Transmission mode
MOD2024R (MOD.22)	24Vcc - 1.8W - Break mode
MOD2048E (MOD.23)	48Vcc - 3.5W - Transmission mode
MOD2048R (MOD.24)	48Vcc - 1.8W - Break mode

Pneumatic DCM	
Ref.	Type
MOD20P (MOD.25)	Pressure: 6 to 20 bar

Product identification	
	Information on label (from top to bottom)
	- Manufacturer 's name
	- Manufacturer 's number
	- Certification body
	- Module possible
- Article code	
- Lot number	
- DCM output (in use)	



- When carrying out installation tests, check that the tensile stress on the cable does not exceed the maximum value stated for the winch.
- Make sure to tighten both the clamping screws when fixing the steel cable in the spool.

NF - Control devices for F.S.S.
This mark certifies :
- conformity to the norm NF S 61-938 for S.C.P.s
- the values of the characteristics given in this technical file.
Certification Body
AFNOR Certification - 11 Rue F. de Pressensé
93571 LA PLAINE SAINT DENIS CEDEX



TR2001 - TR2011 - TR2001-15M

REMINDER :

Cable length : § 7.3.1 of the NFS 61-932

The DCM line cannot be longer than :

- 15 m if its full length is visible from the ground ;
- 8 m in other cases.

Protection of the cable : § 7.3.1 of the NFS 61-932

...The steel cable of the DCM line should be protected (by a rigid pipe, outer casing, etc.) ...

Number of diversions : § 7.3.1 of the NFS 61-932

..The authorised maximum number of diversions per DCM is **three** (the pulleys belonging to the ADS are not included) ...

Height of installation : § 9.1 of the NFS 61-932

The safety device to be used should be fitted at a height of between 0,90 m and 1,30 m from the ground.

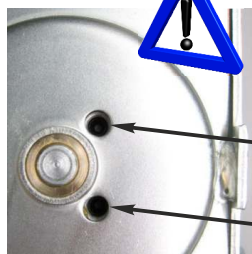
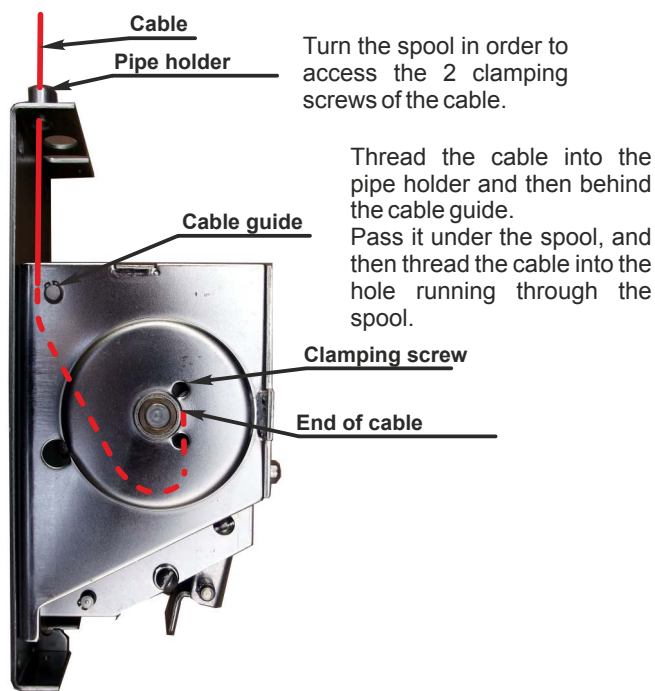
Installation

Lift off the casing.

Check that the wall or hanging surface is completely flat, in order to ensure that the box is fitted correctly.

Fix the winch securely to the wall or hanging surface.

Check the height of the triggering lever.



After tightening them, the screws should not be visible through the holes in the casing.



Wind the cable around the spool once, then connect the other end of the cable to the aperture in the open position.
Finish the installation by winding the cable onto the winch using the handle.

Connecting the DCMs

See corresponding technical files

Testing

Carry out a triggering test by pulling the lever forward, to check that everything is working correctly.

Replace the casing.

SMOKE EXHAUST Use

In the case of a fire, the winch will be triggered by the module or modules fitted.

Resetting

Depending on the MODULE or MODULES fitted.

Make sure that the distance control command (if there is one) is switched off.

In pneumatic mode : check that the network is in pressure off.

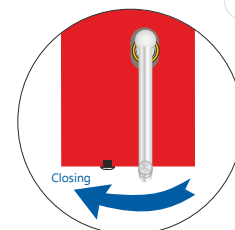
In break mode : check that the electric line is back in service (power on).

In transmission mode : check that the electric line is back in service (power off).

Unscrew the 2 screws on the casing and lift it off, then pull the lever on the side of the winch forwards as far as possible in order to place the hold magnet keeper-plate back in position.

Put the crank in place and lift it upwards.

Turn the crank to the left in order to close the smoke and heat exhaust outlet. Remove the crank.



Maintenance

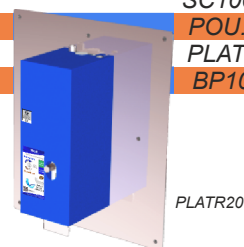
THE PRODUCT, every 6 months.

Check the working order and the lubrication inside the moving parts.

INSTALLATION, see according to norm NFS61-933

Easy installation, useful material

Steel piping	TAT2508
Pipe clip Ø8	COL8M100
Metal trunking	GM201
Steel cable	CABT524
DCM	MOD20...
Cable tie	SC1003
Pulley	POU...
Extra wide mounting plate	PLATR20
Safety cabinet	BP100



Technical Characteristics

Material	: Steel, aluminium, bronze.
Protection	: Red RAL3000 (TR2001) White RAL9010 (TR2011), zinc coating.
Energy	: Manual force to be applied for winding < 10daN.
DCM exit	: By multi-strand steel cable Ø 2,4 mm.
Length of unwound cable	: 4,2 m.
Traction force	: - which can be withstood by the winch and cable fastener : 300 daN. - which can be withstood by the cable without interfering with the triggering : mini. 0,75 daN and max.105 daN.
Precautions	: Stock and install away from bad weather conditions.

