

Intrinsic and cable traction

SEC5100

Description - General information

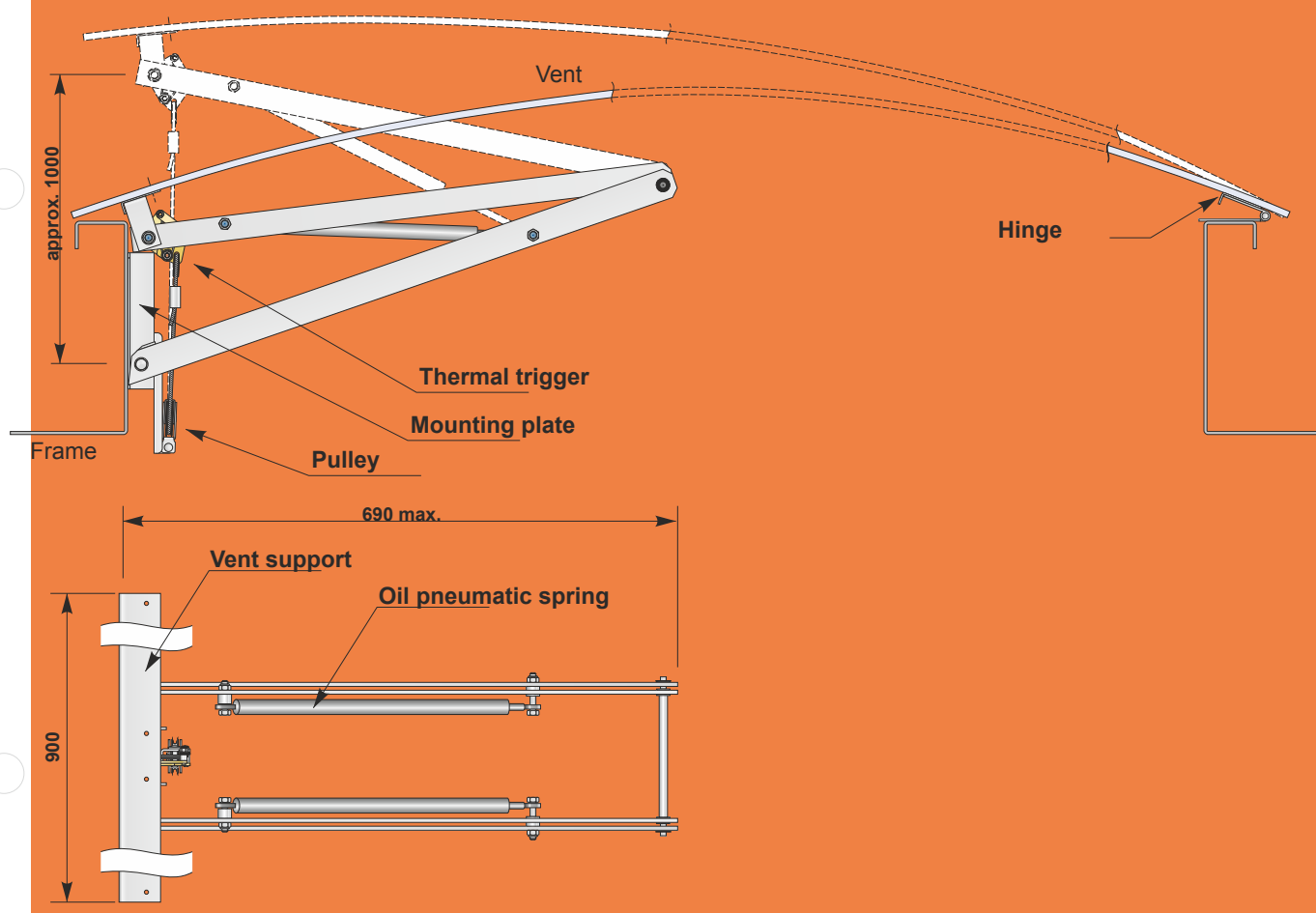
Mechanism which enables the opening and closing of a roof vent (polyester, alveolar polycarbonate, acrylic). The opening is carried out using intrinsic energy (oil pneumatic springs) and the closing by cable traction (winch). This product can be adapted to fit an existing vent.

It consists of an articulated metal structure with a mounting plate on the frame, a support to fix to the vent on the opening side and a hinge on the inside.

A thermal trigger standard calibrated at 91°C carries out automatic opening in the case of a rise in temperature. Other calibrations of the thermal trigger are available on request.

A pulley block on the support plate allows the positioning of the cable for closing.

Diagram



Technical Characteristics

Material : Steel, aluminium.
Protection : Epoxy, RAL9001, zinc coating
Opening : 1000 mm approximately
Tensile stress : Closing : 80daN max, close hold 25 daN
Weight of the vent : 40 kg max.
Temperature in use : -20°C / +110°C
Precautions : Stock and install away from bad weather conditions.

DUPUY EQUIPEMENTS

Les Ajeux - 72400 La Ferté Bernard - France

Tel. : +33 (0)2 43 60 78 60 - Fax : +33 (0)2 43 93 41 94

e-mail : clients@de72.fr



www.dupuy-equipements.com

