

Side hung INWARD OPENING MECHANICAL EXUFACE

Technical File
CE/NF012a

OPEN / CLOSE OPERATED BY SPRINGS AND CABLE

CFFR2MTxxVxRx

Description

The Mechanical EXUFACE, a CE certified facade SHEV window, has been designed to be incorporated easily and stylishly into all types of facade.

Its different versions, either mechanical or pneumatic, fully meet current regulatory requirements.

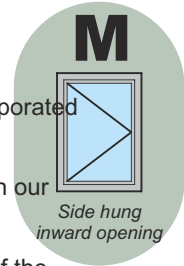
Easy to connect, the Mechanical EXUFACE is delivered with all its operating components already fitted in our factory, including a $\varnothing 2.4$ cable conforming to norm NFS61932.

Inconspicuously mounted, the power supply can be fitted on the right or the left-hand side.

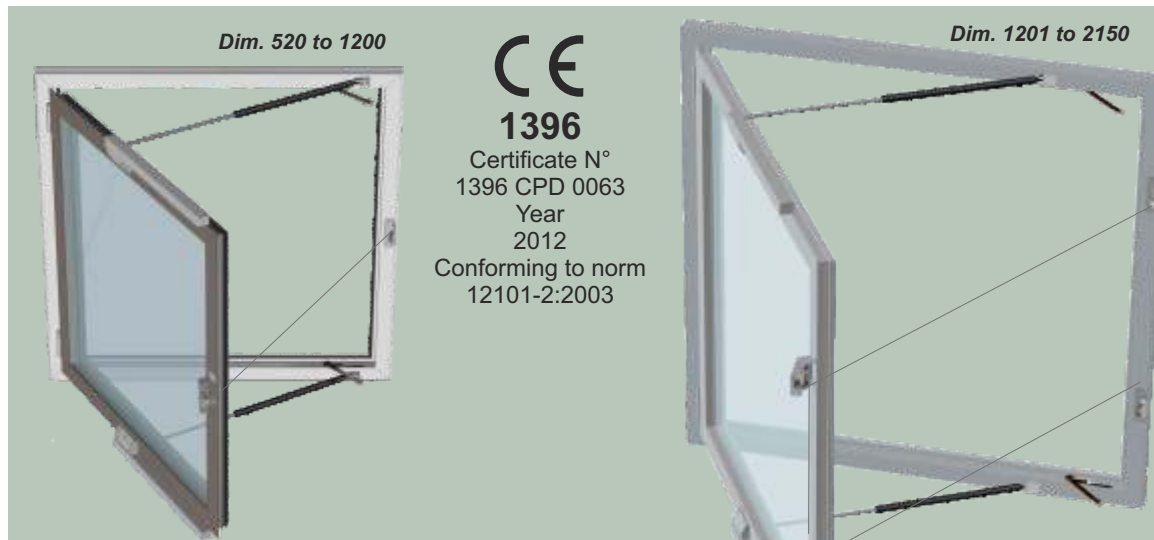
Its technical design means that on models over 1200mm wide, a second locking point ensures a tight fit of the sash against the frame base, providing perfect weathertightness.

Stylish, the EXUFACE can be delivered with the option of cladding painted to coordinate with the frame, thus hiding any unsightly components.

Excellent performance, operated by our winch "TR20", the Mechanical EXUFACE guarantees 10,000 cycles of ventilation and 1,000 cycles of smoke exhaust !



EXUFACE



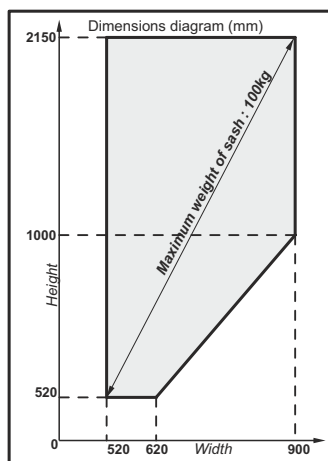
Specifications

Type	: Type B (open and close)
Frame type	: Side hung inward opening
Opening time and angle	: Less than 60s for 60°
Bearing plane angle	: 0° in relation to the vertical.
Safety position	: Held in place by the thrust from oil pneumatic springs
Control device	: Manual or distance controlled, by the release of a steel cable
Resetting	: By winding the cable back onto the winch.
Cable feed	: According to table overleaf
Range of dimensions	: See the table below
Protection	: Zinc coating, varnishing
Colours	: RAL9010 (white), RAL9006 (metallized light grey), other colours on request
Glazing	: Glass, polycarbonate, sandwich pannel measuring between 14 and 37mm for a sash weighing 100kg maximum.



www.marque-nf.com
NF - Smoke and Heat Exhaust Ventilator

This mark certifies :
conformity to norms
NF S 61-937-1 and NF S 61-937-7
in accordance with the rules for certification NF 405
of the values of the characteristics
given in this technical file.
Certification Body
AFNOR Certification
11 Rue F. de Pressensé
93571 LA PLAINE
SAINT DENIS CEDEX



Area of validity

General characteristics of Actuated devices of Safety (ADS) :

- An A.D.S. must not issue commands
- Devices which allow the control of safety and/or standby positions of the ADS
- Unblocking power external to the ADS
- Operational independence of the automatic and distance controls
- No distance controlled resetting if set in safety position by automatic control
- Resetting by distance control if the power has been interrupted during the previous resetting

General characteristics of the constituents :

- Control of the positions of the A.D.S.
 - Class III for the electrical elements working under safety extra low voltage (SELV)
 - Insulation of SELV electrical circuits and of the electrical circuits of other devices
 - Minimum protection index IP 42
 - Presence of the principal connection device
 - Specific SELV connection device
 - Functioning of the traction stop device
 - Minimum electrical characteristics of the position contacts
 - Independence of electrical control circuits from other circuits
 - Test pressures of pneumatic materials
- Characteristics of the distance control input :
- Characteristics of the distance control input through steel cable
 - Characteristics of the electric distance control input
 - Characteristics of the pneumatic distance control input
- Characteristics of the power input :
- Characteristics of the electric power input
 - Characteristics of the pneumatic power input

ALL RIGHTS RESERVED. OUR PRODUCTS MAY BE SUBJECT TO MODIFICATION. THEREFORE THIS DOCUMENT CANNOT BE CONSIDERED CONTRACTUAL. ALL MODELS ARE PATENTED. DO NOT LITTER THE PUBLIC HIGHWAY.

DUPUY EQUIPEMENTS

Les Ajeux - 72400 La Ferté Bernard - France

Tel. : +33 (0)2 43 60 78 60 - Fax : +33 (0)2 43 93 41 94

e-mail : clients@de72.fr



www.dupuy-equipements.com

Technical Characteristics

Material : Aluminium, glass, steel, synthetic material.
 Protection : Varnishing, zinc coating.
 Precautions : Stock and install away from bad weather conditions.

Entry of connections (in mm)			
Type of window	Width	Height	Cable feed
Side hung inward opening	Wdth	Up to 1200	Wdth - 80
		More than 1201	(Wdth - 80) x 2
Examples : - Window 1000Ht x 600 ⇒ 520 cable feed - Window 1700Ht x 800 ⇒ 1440 cable feed			

Opening direction	Range of dimensions	
	Minimum	Maximum
Side hung inward opening		

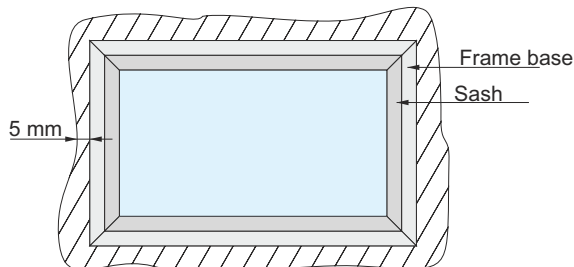
Declared Characteristics

Aerodynamic Free Area "Aa" : Depending on dimensions (consult us)
 Wind Load "WL" : 1500
 Snow Load "SL" : Does not apply
 Low ambient Temperature "T" : 00
 Reliability "Re" : 1 000 + 10 000 cycles ventilation
 Heat Resistance "B_{wall}" : 300
 Reaction to fire : A1
 Temperature of thermal triggering : Does not apply
 Type of SHEV mechanism : Type B (open and close)

Options

- Position contacts open / close
- Finishings such as flashings, trim, joint covers ...

How to measure the window



Subtract a minimum of 5mm from the dimensions of the height and width of the cavity in the wall.

Eg. : for a cavity of 900h x 1400, the total dimensions of the window will be 890h x 1390

Installation

When installing the window,
 - First **fix the window in place, 2 support wedges per side.**
 - Make sure the **frame base is squared up by checking 2 opposite angles**
 - Check the plumb of the frame base, **any vertical misalignment should be less than 2mm per metre.**
 The installation, fixings and weathertightness should be carried out in accordance with the norm NF DTU 36.5 in force.

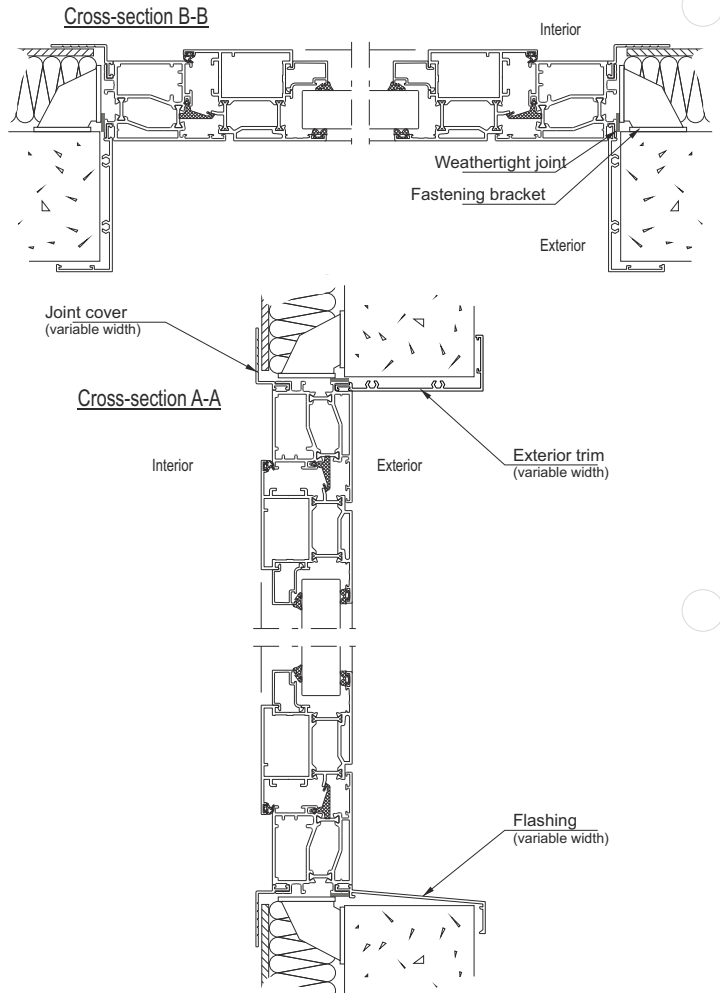
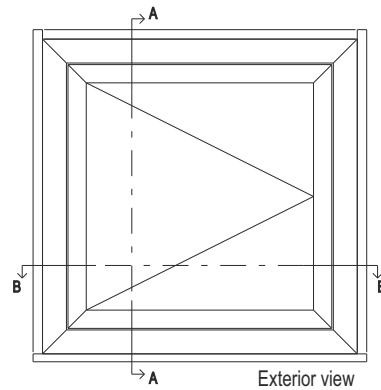
Product identification

E.ALIM : power input
 E.TELE : distance control input
 E : transmission
 R : break
 Hpa : height of air passage
 Lpa : width of air passage

Product delivered with markings translated

Standard cross-sections

Installation in an insulated wall



DUPUY EQUIPEMENTS
 72400 La Ferté Bernard
DENFC - EXUFACE
 Produit fabriqué en 2014
 Energie : Intrinsic
CFFR2MT. . V.R. .
 CE 1396
 1396 CPD 0063
 12101-2.2003
 Aa= x.x.xm² WL 1500
 T (00), Re 1000 + 10000
 B 300, A1, type B
 N° série : xxxxxxxxxxxx
 N° : NF13/05.01
 DENFC monté en façade
 hpa : xxxx mm
 lpa : xxxx mm
 E-ALIM :
 Energie intrinsèque
 E-TELE :
 F. résist dyn : 0.5 daN
 F. réarmement max : 100daN
 Course câble : xxxx mm
 NF - Dispositifs d'Evacuation
 et de Chauffage
 en Conformité avec la norme
 NF DTU 36.5
 valeurs des caractéristiques
 indiquées dans cette fiche.
 www.marque-nf.com

