

Side hung INWARD OPENING MECHANICAL EXUFACE

Technical File
CE/NF019a

OPEN ONLY OPERATED BY OIL PNEUMATIC SPRINGS **CFFR1MTxxVxRx**

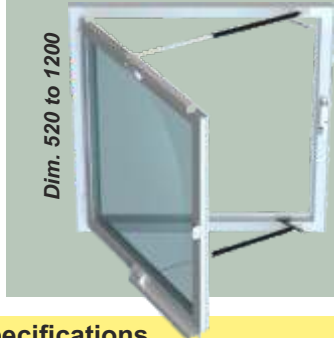


EXUFACE

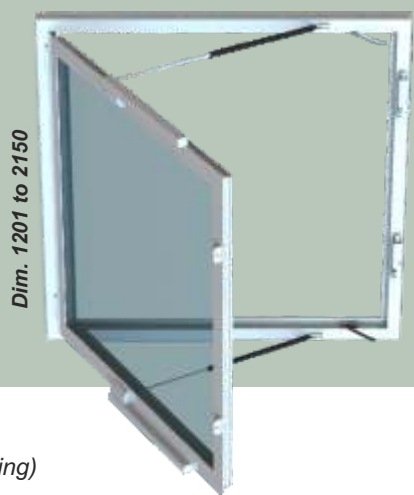
Description

The Mechanical EXUFACE O/O, a CE certified facade SHEV window, has been designed to be incorporated easily and stylishly into all types of facade. Its different versions, either mechanical or pneumatic, fully meet current regulatory requirements. Easy to connect, the Mechanical EXUFACE O/O is delivered with all its operating components already fitted in our factory. Inconspicuously mounted, different types of locking pin mean it can be adapted to the nature of the control line. Its technical design means that on models over 1200mm wide, a second locking point ensures a tight fit of the sash against the frame base, providing perfect weathertightness. Stylish, the EXUFACE can be delivered with the option of cladding painted to coordinate with the frame, thus hiding any unsightly components. Excellent performance, the Mechanical EXUFACE O/O guarantees 10,000 cycles of ventilation and 1,000 cycles of smoke exhaust !

Types of locking system			
Ref.	Locking	Triggering	DCM energy
M	Mechanical	Traction of steel cable	Manual, cable feed 15mm Manual unlocking
24E 24R 48E 48R	Mechanical	Electric	24 Vcc / 3.5W Transmission 24 Vcc / 1.6W Break 48 Vcc / 3.5W Transmission 48 Vcc / 1.6W Break Manual unlocking
P	Mechanical	Pneumatic	3 bar mini Manual unlocking



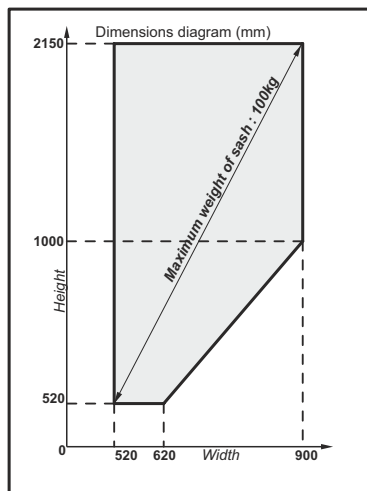
CE
1396
Certificate N°
1396 CPD 0063
Year
2012
Conforming to norm
12101-2:2003



Specifications

- Type : Type A (open only, manual closing)
- Frame type : Side hung inward opening
- Opening time and angle : Less than 60s for 60°
- Bearing plane angle : 0° in relation to the vertical.
- Safety position : Held in place by the thrust from oil pneumatic springs
- Control device : Electric, pneumatic or manual distance control
- Resetting : Manually on the aperture
- Range of dimensions : See the table below
- Protection : Zinc coating, varnishing
- Colours : RAL9010 (white), RAL9006 (metallized light grey), other colours on request
- Glazing : Glass, polycarbonate, sandwich pannel measuring between 14 and 37mm for a sash weighing 100kg maximum.

NF
www.marque-nf.com
NF - Smoke and Heat Exhaust Ventilator
This mark certifies :
conformity to norms
NF S 61-937-1 and NF S 61-937-7
in accordance with the rules for certification NF 405
of the values of the characteristics
given in this technical file.
Certification Body
AFNOR Certification
11 Rue F. de Pressensé
93571 LA PLAINE
SAINT DENIS CEDEX



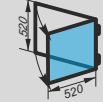
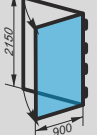
- Area of validity**
General characteristics of Actuated devices of Safety (ADS) :
- An A.D.S. must not issue commands
- Devices which allow the control of safety and/or standby positions of the ADS
- Unblocking power external to the ADS
- Operational independence of the automatic and distance controls
- No distance controlled resetting if set in safety position by automatic control
- Resetting by distance control if the power has been interrupted during the previous resetting
- General characteristics of the constituents :
- Control of the positions of the A.D.S.
- Class III for the electrical elements working under safety extra low voltage (SELV)
- Insulation of SELV electrical circuits and of the electrical circuits of other devices
- Minimum protection index IP 42
- Presence of the principal connection device
- Specific SELV connection device
- Functioning of the traction stop device
- Minimum electrical characteristics of the position contacts
- Independence of electrical control circuits from other circuits
- Test pressures of pneumatic materials
- Characteristics of the distance control input :
- Characteristics of the distance control input through steel cable
- Characteristics of the electric distance control input
- Characteristics of the pneumatic distance control input
- Characteristics of the power input :
- Characteristics of the electric power input
- Characteristics of the pneumatic power input

ALL RIGHTS RESERVED. OUR PRODUCTS MAY BE SUBJECT TO MODIFICATION. THEREFORE THIS DOCUMENT CANNOT BE CONSIDERED CONTRACTUAL. ALL MODELS ARE PATENTED. DO NOT LITTER THE PUBLIC HIGHWAY.



Technical Characteristics

Material : Aluminium, glass, steel, synthetic material.
Protection : Varnishing, zinc coating.
Precautions : Stock and install away from bad weather conditions.

Opening direction	Range of dimensions	
	Minimum	Maximum
Side hung inward opening		

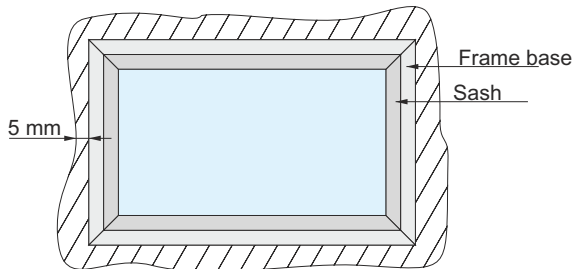
Declared Characteristics

Aerodynamic Free Area "Aa" : Depending on dimensions (consult us)
Wind Load "WL" : 1500
Snow Load "SL" : Does not apply
Low ambient Temperature "T" : 00
Reliability "Re" : 1 000 + 10 000 cycles ventilation
Heat Resistance "B_{wall}" : 300
Reaction to fire : A1
Temperature of thermal triggering : Does not apply
Type of SHEV mechanism : Type A (open only)

Options

- Position contacts open / close
- Finishings such as flashings, trim, joint covers ...

How to measure the window



Subtract a minimum of 5mm from the dimensions of the height and width of the cavity in the wall.
Eg. : for a cavity of 900h x 1400, the total dimensions of the window will be 890h x 1390

Installation

- When installing the window,
- First **fix the window in place, 2 support wedges per side.**
 - Make sure **the frame base is squared up by checking 2 opposite angles**
 - Check the plumb of the frame base, **any vertical misalignment should be less than 2mm per metre.**
- The installation, fixings and weathertightness should be carried out in accordance with the norm NF DTU 36.5 in force.

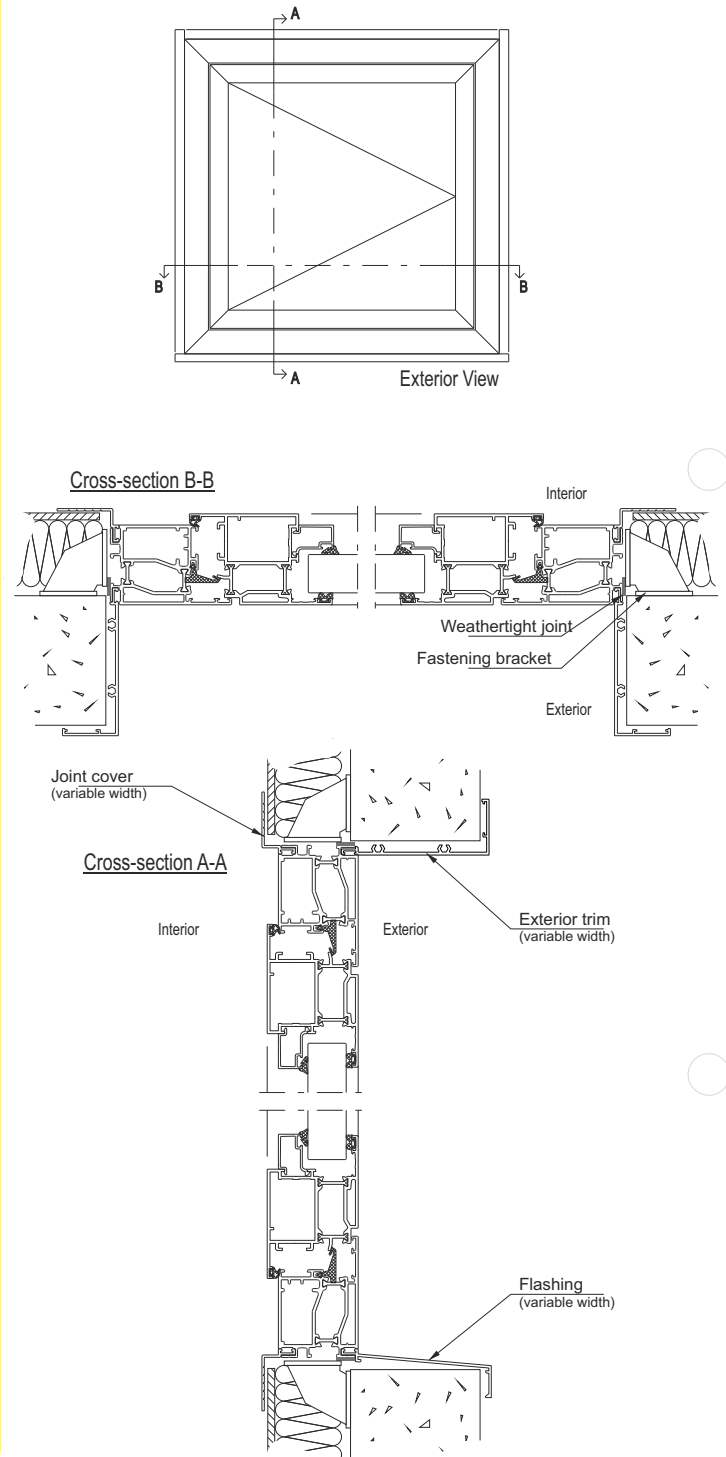
Product identification

E.ALIM : power input
E.TELE : distance control input
E : transmission
R : break
Hpa : height of air passage
Lpa : width of air passage

Product delivered with markings translated

Standard cross-sections

Installation in an insulated wall



<p>DUPUY EQUIPEMENTS 72400 La Ferté Bernard</p> <p>DENFC - EXUFACE Produit fabriqué en 2014 Energie : Intrinsicque CFFR1MT. . V . R . . .</p>	<p>ET191930</p> <p>1396 CPD 0063 12101-2:2003</p> <p>CE 1396</p> <p>Aa= x.xx m², WL 1500 T (00), Re 1000 + 10000 B.300, A1, type A N° série : XXXXXXXXXX</p>	<p>N° : NF-13/03.01 DENFC monté en façade hpa : xxxx mm lpa : xxxx mm E.ALIM : Energie intrinsèque E.TELE : XXXXXXXXXXXXXXXXXXXXX ou manuelle, course 15mm</p>
--	---	--

NF - Dispositifs d'Evacuation Naturelle de Fumée et de Chaleur
Centre marquant certifié
NF S 61-437-1, 1ère édition
www.marque-nf.com - inscrites dans cette fiche.

ALL RIGHTS RESERVED. OUR PRODUCTS MAY BE SUBJECT TO MODIFICATION. THEREFORE THIS DOCUMENT CANNOT BE CONSIDERED CONTRACTUAL. ALL MODELS ARE PATENTED. DO NOT LITTER THE PUBLIC HIGHWAY.

